

Directions to Vital Records Division (615) 741-1763



Total Time: 10 mins, Total Distance: 3.57 miles

Summary and Notes

Map & Directions

Map Only

Directions Only

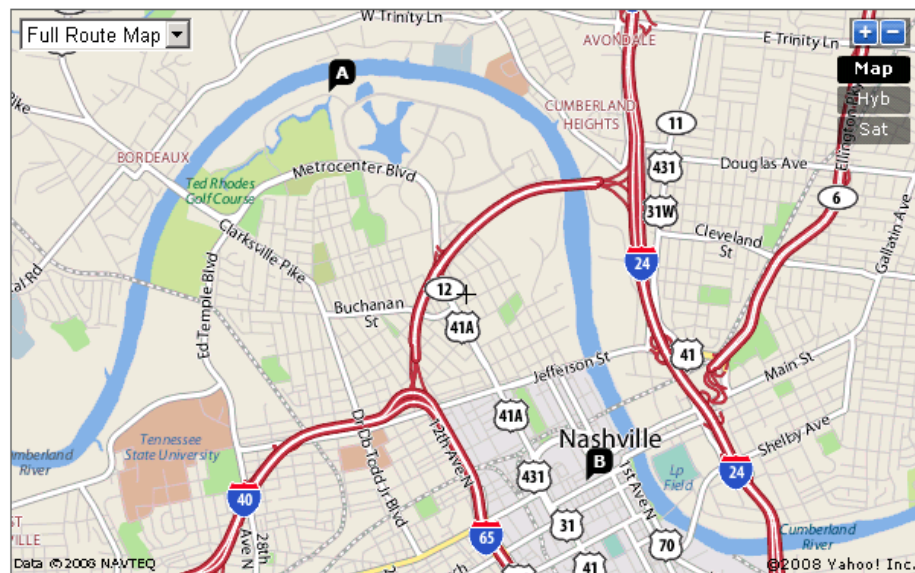
Show Cumulative Distance

Distance

- A** 1. Start at 523 MAINSTREAM DR, NASHVILLE going toward GREAT CIRCLE RD go 0.14 mi
- 2. Turn **R** on GREAT CIRCLE RD go 0.4 mi
- 3. Turn **L** on ROSA L PARKS BLVD(US-41A S) go 2.34 mi
- 4. Turn **L** on JAMES ROBERTSON PKY(US-31 N) go 0.38 mi
- 5. Continue on 4TH AVE N go 0.2 mi
- 6. Turn **R** on UNION ST go 422 ft
- 7. Turn **R** on 5TH AVE N go 158 ft
- B** 8. Arrive at 421 5TH AVE N, NASHVILLE, on the **L**

Time: 10 mins, Distance: 3.57 miles

Map Layout:



When using any driving directions or map, it's a good idea to do a reality check and make sure the road still exists, watch out for construction, and follow all traffic safety precautions. This is only to be used as an aid in planning.